

Two Rivers Park – Forest Management Recommendations

ELYNN REIERSON, CONSULTING FORESTER

INLAND FOREST MANAGEMENT, INC.

Property Overview

Total Acres: 38.420

Forested Acres: 28.5

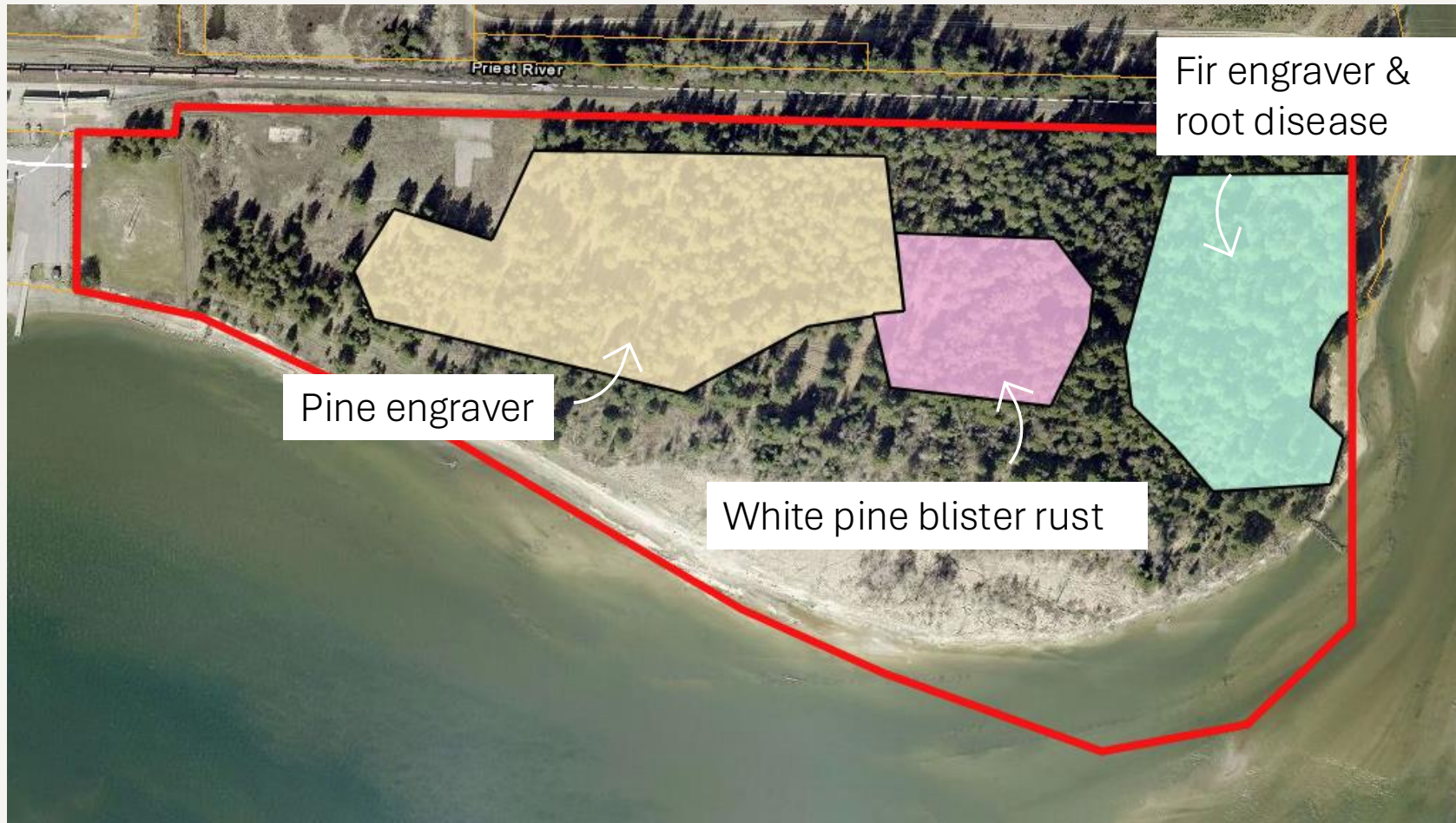
- ½ mile river frontage (riparian habitat)
- 10 acres wetland ecosystem

Tree species present:

Ponderosa pine, western white pine, lodgepole pine, grand fir, Douglas fir, western larch, western redcedar, paper birch, black cottonwood, red alder, +more!

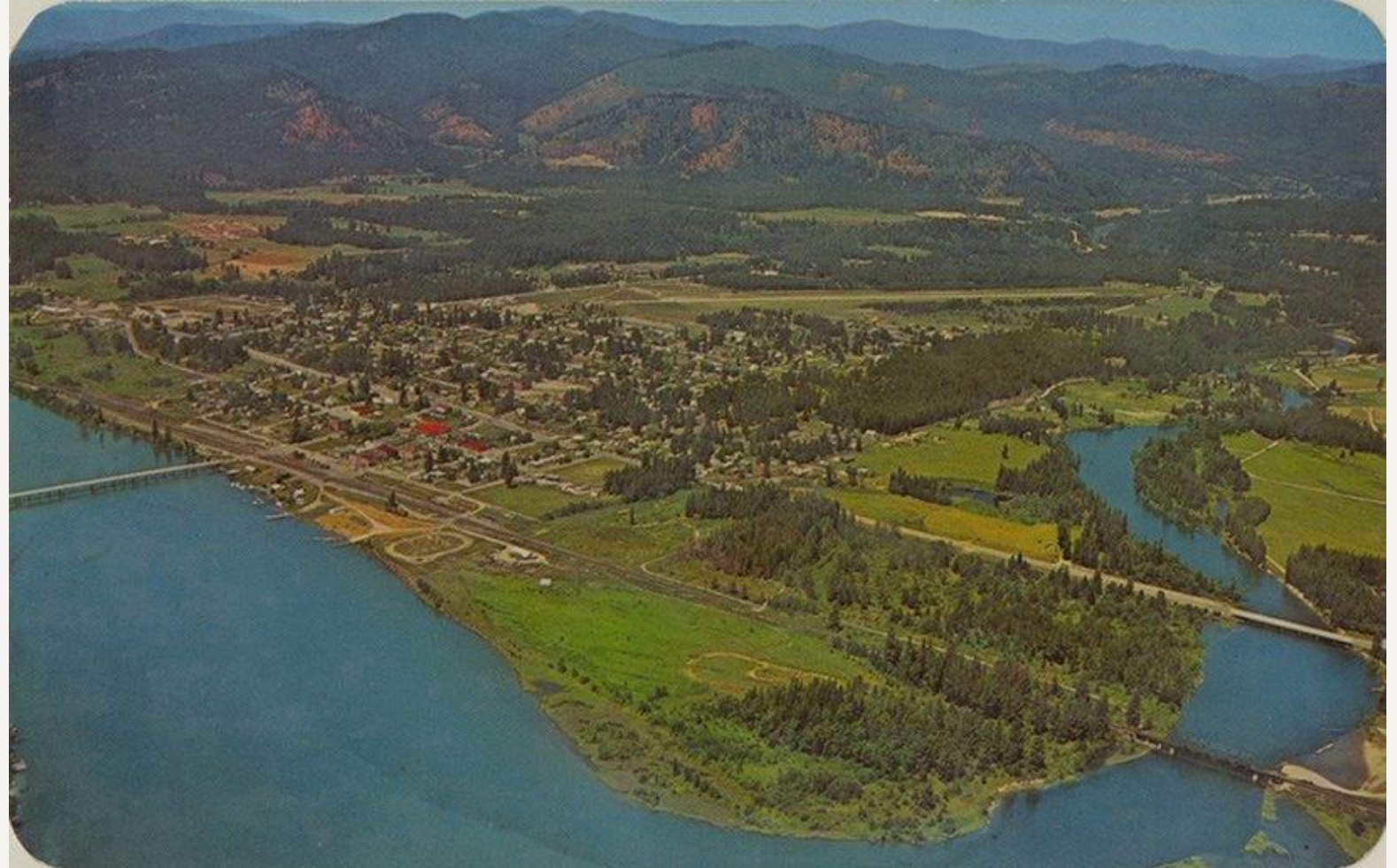


Forest Health



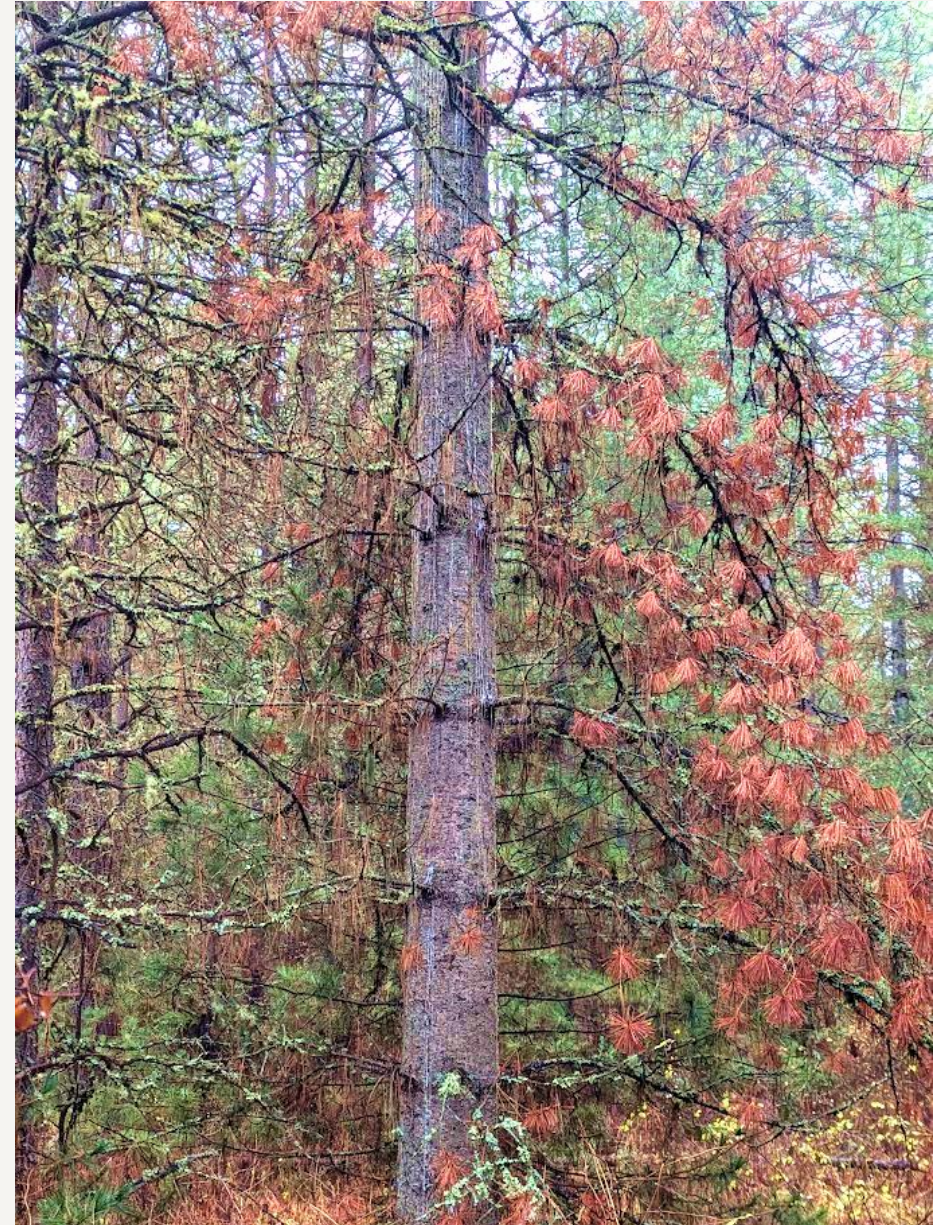
Pine Engraver

- Bark beetle
- Small diameter ponderosa and lodgepole pine
- Issues often associated with availability of pine slash in spring
 - Likely result from windthrow, snow/ice damage etc
- Preventative measures for pine engraver management

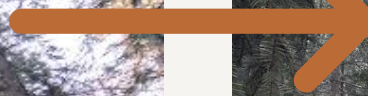


White pine blister rust

- Caused by *Cronartium ribicola*, fungus introduced in early 1900's
- Only affects 5-needle pines (western white pine & whitebark pine in ID)
- Trees not killed by WPBR can be more susceptible to other damaging agents
- Manage by increase rust-resistant white pines on the property & pruning



Fir engraver & root disease



Recommendations

1. Remove hazard trees (dead/dying/structurally compromised) for public safety
2. Remove dead and dying pine component to arrest the spread of bark beetle and WPBR across the east half of the property (aka sanitation cutting)
3. Conduct Hazardous Fuels Treatments to increase safety and forest resiliency in the event of catastrophic wildfire





Fir engraver & root disease

Pine engraver

White pine blister rust

December 1, 2022



Acre scale

potential revenue generating items

- Marina \$\$\$
- Park Pavilion \$
- RV Campground \$\$\$



Questions?



CONTACT

ELYNN REIERSON, CONSULTING FORESTER

INLAND FOREST MANAGEMENT, INC

EREIERSON@FWFORESTRY.COM, (208) 263-9420